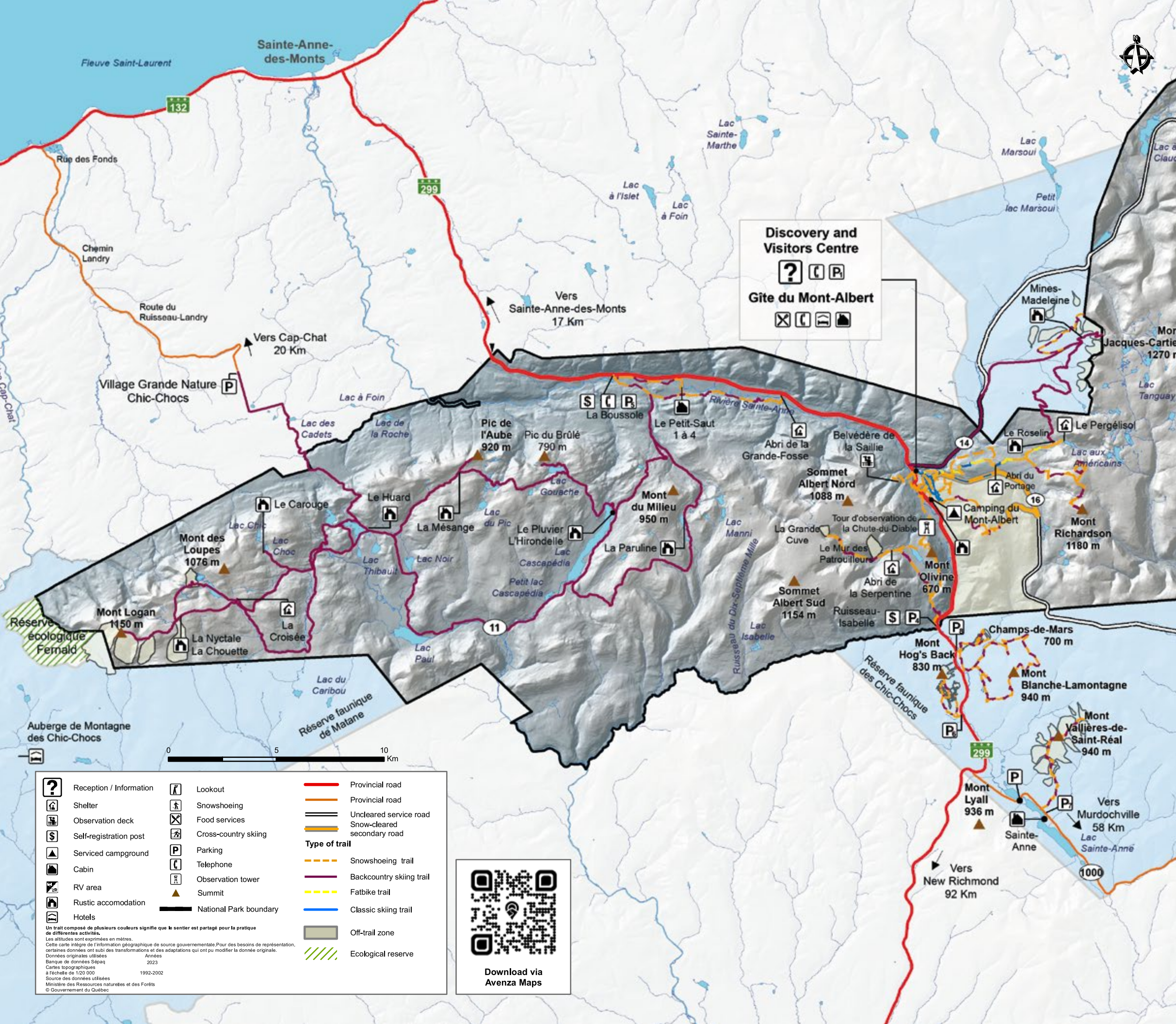


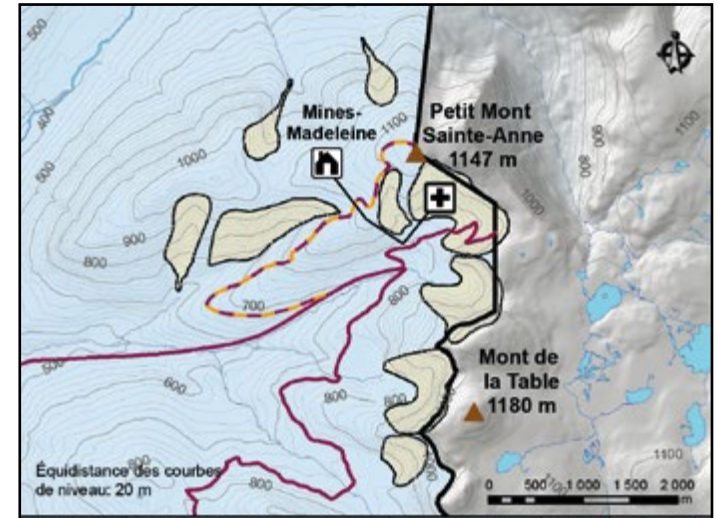
# PARC NATIONAL DE LA GASPÉSIE

## WINTER TRAIL MAP 2023-2024



**Discovery and Visitors Centre**  
 ? ⓘ ⓘ ⓘ  
**Gîte du Mont-Albert**  
 ⓘ ⓘ ⓘ ⓘ

	Reception / Information		Lookout		Provincial road	
	Shelter		Snowshoeing		Provincial road	
	Observation deck		Food services		Uncleared service road	
	Self-registration post		Cross-country skiing		Snow-cleared secondary road	
	Serviced campground		Parking		Snowshoeing trail	
	Cabin		Telephone		Backcountry skiing trail	
	RV area		Observation tower		Fatbike trail	
	Rustic accommodation		Summit		Classic skiing trail	
	Hotels		National Park boundary		Off-trail zone	
<p>Un trail composé de plusieurs couleurs signifie que le sentier est partagé pour la pratique de différentes activités.                  Les altitudes sont exprimées en mètres.                  Cette carte intègre de l'information géographique de source gouvernementale. Pour des besoins de représentation, certaines données ont subi des transformations et des adaptations qui ont pu modifier la donnée originale.                  Données originales utilisées: 2023                  Banque de données SÉPAQ: 2023                  Cartes topographiques à l'échelle de 1:20 000: 1992-2002                  Source des données utilisées: Ministère des Ressources naturelles et des Forêts                  © Gouvernement du Québec</p>		<p></p> <p>Download via Avenza Maps</p>		<p></p>		Ecological reserve



**SAFETY IN AVALANCHED TERRAIN**

All backcountry areas open to snow sports present avalanche danger. Before venturing out, make sure you have the necessary knowledge and equipment. Check the Avalanche Québec website ([www.avalanchequebec.ca](http://www.avalanchequebec.ca)) for the avalanche bulletin. You can also download (\$) the «Ski Haute-Gaspésie» app which offers geolocation and detailed maps of the sectors in addition to information to plan your outings. **Travel is exclusively limited to designated trails and off-trail areas.**

Apple store

Google store

PARC NATIONAL DE LA GASPÉSIE

STARTING POINT	TRAIL	ACTIVITY	DISTANCE	TYPE	DURATION	LEVEL
Centre de découvertes et de services - CDS (P1)	La chute Ste-Anne		1.7 km	Round-trip	Less than 2 hours	Easy
	La Lucarne		2.5 km	Loop	Less than 2 hours	Easy
	La Saillie		4.2 km	Round-trip	Less than 2 hours	Intermediate
	La chute du Diable		7.0 km	Round-trip	Half day	Intermediate
	Les Panaches		5.7 km	Loop	Less than 2 hours	Intermediate
	L'Original		4.2 km	Loop	Less than 2 hours	Intermediate
	Lac aux Américains		18.2 km	Round-trip	Full day	Difficult
	Abri du Portage		9.6 km	Round-trip	Half day	Difficult
	Mont Olivine		11.4 km	Round-trip	Full day	Difficult
	La Serpentine		12.4 km	Round-trip	Full day	Difficult
Ernest-Laforce (P2)	Mont Ernest-Laforce		4 km	Round-trip	Half day	Intermediate
	Mont J-A Pelletier		7.2 km	Round-trip	Half day	Intermediate
	Mont Macoun *no marked trails		+10 km	Round-trip	Full day	Difficult
Entrée route 160 (P3)	Mont Richardson		16 km	Round-trip	Full day	Very Difficult
	Mont Joseph-Fortin		14.4 km	Round-trip	Full day	Difficult
	Abri-du-Portage		1.2 km	Round-trip	Less than 2 hours	Easy
Ruisseau Isabelle (P4)	Lac aux Américains		8.8 km	Round-trip	Half day	Intermediate
	La Serpentine		10 km	Round-trip	Half day	Intermediate
	Mont Olivine		8.8 km	Round-trip	Half day	Intermediate
	La Grande Cuve		17 km	Round-trip	Full day	Difficult
La Boussole (P5)	Le Mur des Patrouilleurs		12 km	Round-trip	Full day	Very Difficult
	Le Petit Saut		8.2 km	Round-trip	Half day	Intermediate
	La Grande Fosse		18 km	Round-trip	Full day	Intermediate

RÉSERVE FAUNIQUE DES CHIC-CHOCs

Hog's back (P6)	Hog's back		6 km	Round-trip	Half day	Difficult
Vallières (P7)	Vallières-St-Réal		10 km	Round-trip	Full day	Difficult
Champs-de Mars (P8)	Champs-de-Mars		5.2 km	Round-trip	Half day	Intermediate
	Blanche-Lamontagne		6.4 km	Round-trip	Half day	Difficult

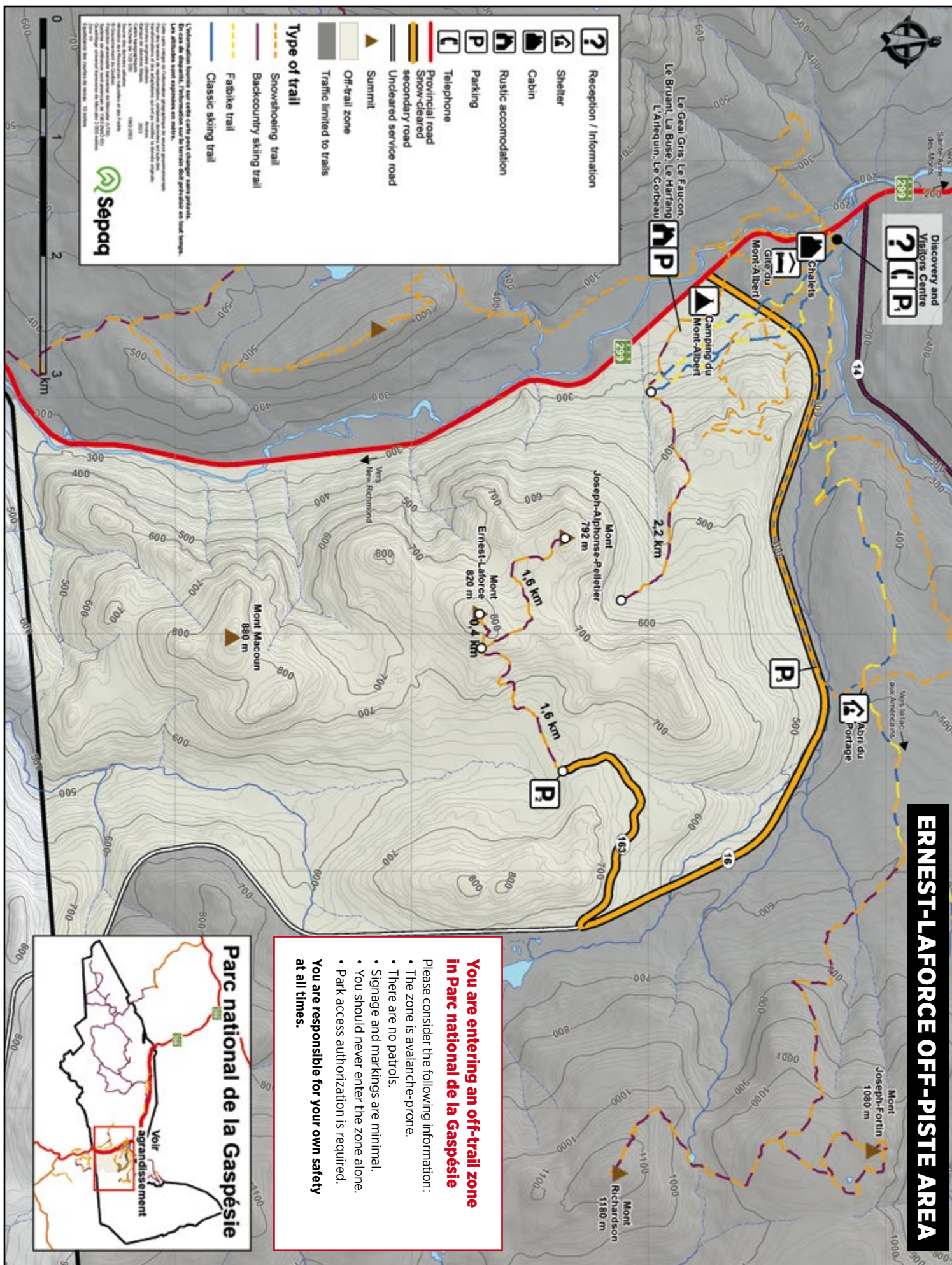
Snowshoe Classic cross country ski Fatbike Backcountry ski Alpine touring skiing

Due to the caribou protection plan, some areas may be closed in winter 2023-2024. Consult our website or inquire directly at the Park's Discovery and Visitors Centre.



Alpine touring skiing in the Chics-Choc

Is this your first alpine touring skiing experience or your inaugural visit to the Chic-Chocs mountains? This introductory session will provide an introduction to mountain safety. The experienced guide provided by our partner, Ski Chic-Chocs, will accompany you all day long to ensure a safe and memorable outing.



**You are entering an off-trail zone in Parc national de la Gaspésie**

Please consider the following information:

- The zone is avalanche-prone.
- There are no patrols.
- Signage and markings are minimal.
- You should never enter the zone alone.
- Park access authorization is required.

**You are responsible for your own safety at all times.**

