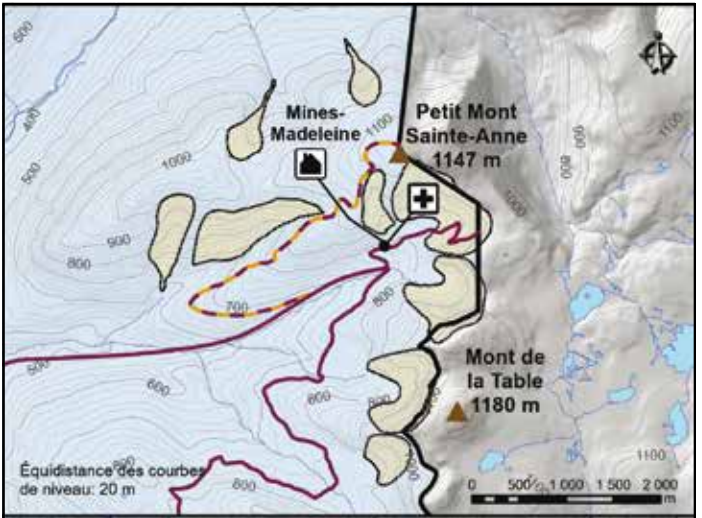
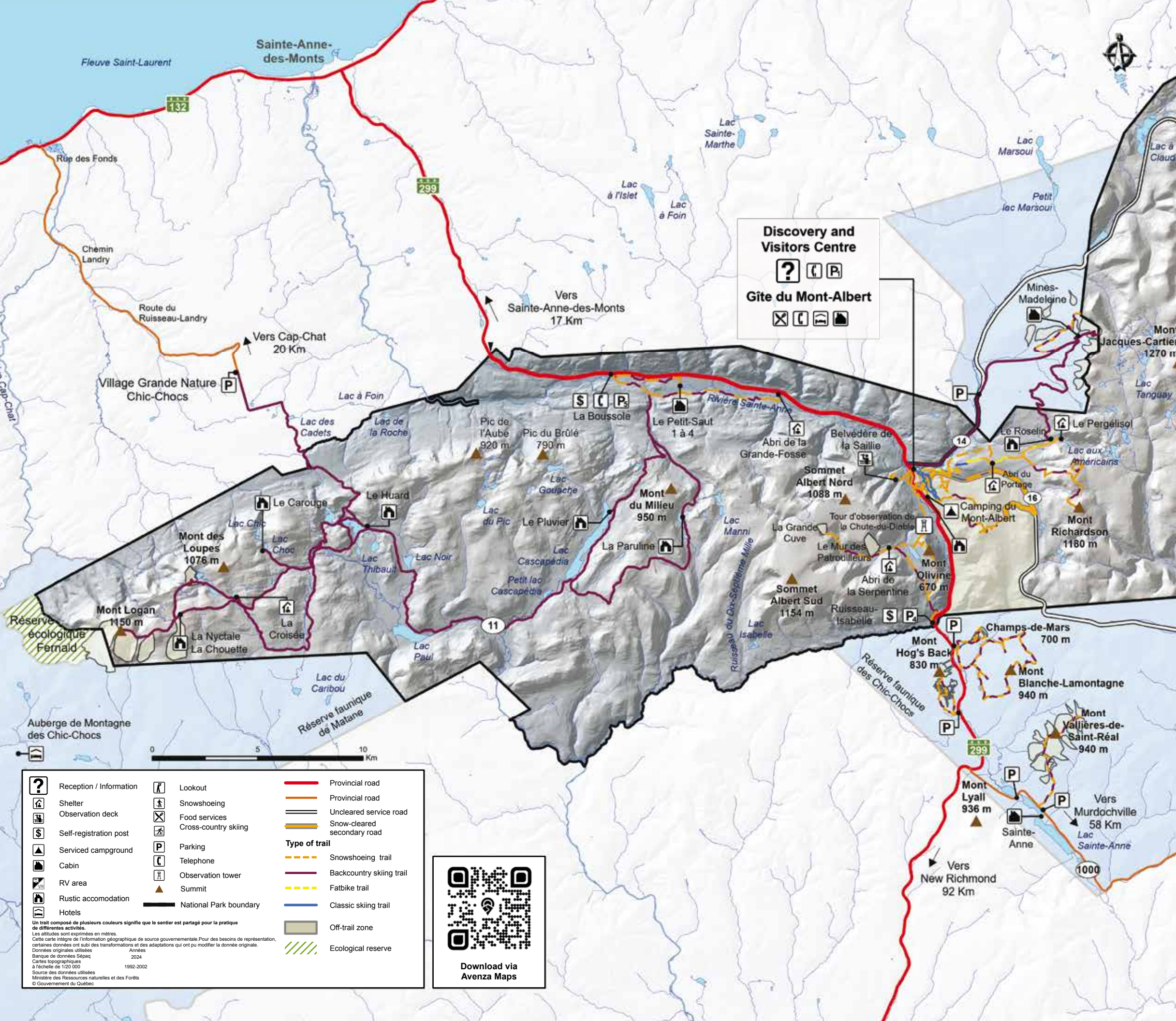


PARC NATIONAL DE LA GASPÉSIE

WINTER TRAIL MAP 2024-2025

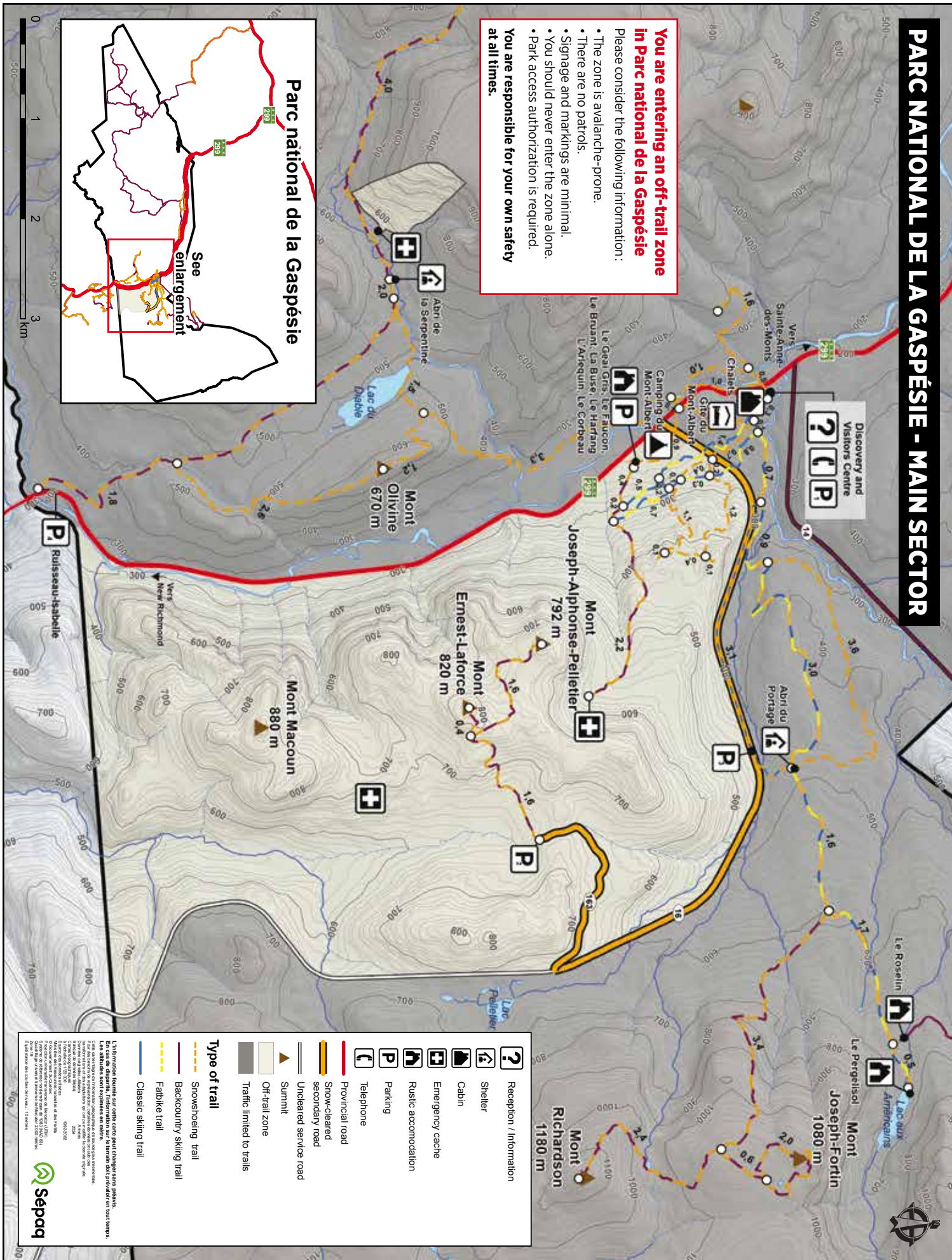


⚠ IN THE WILD, YOUR SAFETY IS YOUR RESPONSIBILITY

Outdoor activities can involve certain risks.

Always be sure to have the skills and abilities required for the activity you choose. It is very important to find out about the risks involved in the activity, to know and respect your own limits and to use appropriate equipment. Preparing yourself adequately is the first step in the safe and enjoyable practice of your favourite activities.

For more information, visit our website at sepaq.com/security



PARC NATIONAL DE LA GASPÉSIE

STARTING POINT	TRAIL	ACTIVITY	DISTANCE	ELEVATION	TYPE	DURATION	LEVEL
Centre de découvertes et de services - CDS (P1)	La chute Ste-Anne	[Snowshoe]	1,7 km	Low	Round-trip	Less than 2 hours	Easy
	La Lucarne	[Snowshoe]	2,5 km	80 m	Loop	Less than 2 hours	Easy
	La Saillie	[Snowshoe]	4,2 km	190 m	Round-trip	Less than 2 hours	Intermediate
	La chute du Diable	[Snowshoe]	7,0 km	120 m	Round-trip	Half day	Intermediate
	Les Panaches	[Snowshoe]	5,7 km	235 m	Loop	Less than 2 hours	Intermediate
	L'Original	[Snowshoe] [Fatbike] [Backcountry ski]	4,2 km	125 m	Loop	Less than 2 hours	Intermediate
	Lac aux Américains	[Snowshoe] [Classic cross country ski] [Fatbike] [Backcountry ski]	18,2 km	475 m	Round-trip	Full day	Difficult
	Abri du Portage	[Snowshoe] [Classic cross country ski] [Fatbike] [Backcountry ski]	9,6 km	290 m	Round-trip	Half day	Difficult
	Mont Olivine	[Snowshoe]	11,4 km	460 m	Round-trip	Full day	Difficult
	La Serpentine	[Snowshoe]	12,4 km	360 m	Round-trip	Full day	Difficult
Ernest-Laforce (P2)	Mont Ernest-Laforce	[Snowshoe] [Backcountry ski]	4 km	155 m	Round-trip	Half day	Intermediate
	Mont J-A Pelletier	[Snowshoe] [Backcountry ski]	7,2 km	130 m	Round-trip	Half day	Intermediate
	Mont Macoun *no marked trails	[Snowshoe] [Backcountry ski]	+10 km	215 m	Round-trip	Full day	Difficult
Entrée route 160 (P3)	Mont Richardson	[Snowshoe] [Backcountry ski]	16 km	825 m	Round-trip	Full day	Very Difficult
	Mont Joseph-Fortin	[Snowshoe] [Backcountry ski]	14,4 km	615 m	Round-trip	Full day	Difficult
	Abri-du-Portage	[Snowshoe] [Classic cross country ski] [Fatbike] [Backcountry ski]	1,2 km	30 m	Round-trip	Less than 2 hours	Easy
	Lac aux Américains	[Snowshoe] [Classic cross country ski] [Fatbike] [Backcountry ski]	8,8 km	225 m	Round-trip	Half day	Intermediate
Ruisseau Isabelle (P4)	La Serpentine	[Snowshoe] [Fatbike] [Backcountry ski]	10 km	270 m	Round-trip	Half day	Intermediate
	Mont Olivine	[Snowshoe]	8,8 km	375 m	Round-trip	Half day	Intermediate
	La Grande Cuve	[Snowshoe] [Backcountry ski]	17 km	720 m	Round-trip	Full day	Difficult
	Le Mur des Patrouilleurs	[Snowshoe] [Backcountry ski]	12 km	680 m	Round-trip	Full day	Very Difficult
La Boussole (P5)	Le Petit Saut	[Snowshoe] [Backcountry ski]	8,2 km	Low	Round-trip	Half day	Intermediate
	La Grande Fosse	[Snowshoe] [Backcountry ski]	18 km	60 m	Round-trip	Full day	Intermediate

RÉSERVE FAUNIQUE DES CHIC-CHOCS

Hog's back	Hog's back	[Snowshoe] [Backcountry ski]	6 km	400 m	Round-trip	Half day	Difficult
Vallières	Vallières-St-Réal	[Snowshoe] [Backcountry ski]	10 km	510 m	Round-trip	Full day	Difficult
Champs-de Mars	Champs-de-Mars	[Snowshoe] [Backcountry ski]	5,2 km	400 m	Round-trip	Half day	Intermediate
	Blanche-Lamontagne	[Snowshoe] [Backcountry ski]	6,4 km	620 m	Round-trip	Half day	Difficult
Jonction route 14 et route des Mines	Mines Madeleine	[Backcountry ski]	12 km	810 m	Round-trip	Full day	Difficult

[Snowshoe] [Classic cross country ski] [Fatbike] [Backcountry ski] [Mountain ski]



Skiing the peaks of Gaspésie

The majestic Chic-Chocs mountain range is a renowned destination for lovers of beautiful powder snow. An outdoor outing in this exceptional territory does, however, come with certain responsibilities as a visitor. Here's everything you need to know for a successful winter day excursion, from trails and sectors status, regulation in place and daily planning tools.

